

TWEED HEADS SHOPPING COMPLEX OPENS

December 1st saw the opening of Leighton's largest retail development project to date. This was the Tweed Mall shopping complex located in the heart of Tweeds Heads on the N.S.W./Queensland border.

The centre was fully let prior to completion with a 45,000 sq.ft. Target Store, a 35,000 sq.ft. Woolworths Store and some 43 specialty shops. At the first floor level, there is 7,000 sq.ft. of office space which has been let to local accountants, solicitors, and doctors.

The opening took place at 2.15 on the Saturday afternoon with the plaque being unveiled by Mr. J.C. Boyd, M.L.A., the local Country Party member.

As a special attraction of the opening festivities, television personalities, Tony Barber and Barbara Rogers put on a 'mini temptation'. This attraction plus a fishing competition, relay race, pigeon race and a dutch auction attracted an estimated crowd of 8,000 to see the opening.

The success of the opening was particularly satisfying as it represented the culmination of many months' hard work by both Leighton Contractors and Leighton Properties. The initial planning and negotiations commenced approximately one year ago, while construction did not commence until March/April of 1973.

Personalities from the Leighton Group present at the opening were:— Mr. & Mrs. S.L. Wallis, Mr. & Mrs. G.J. French, Mr. & Mrs. D. Young, Mr. & Mrs. C.M.G. Brown, Mr. & Mrs. R. Dunning, Mr. & Mrs. J. Stanworth, Mr. & Mrs. K. Nipperess and Mr. & Mrs. J. Edge and the Centre Manager, Mr. Howard Menz.

As the centre is fully let and trading briskly, it joins Leighton Properties' portfolio as another successful income producing investment.



The Official Opening.



Some of the crowd.

LEIGHTON GIRL WINS COMMONWEALTH GAMES SELECTION

Celebrations were the order of the day at Summer Hill when the announcement came of the selection of Jenny Lamy in the Australian Athletics Team for the Commonwealth Games to be held at Christchurch, New Zealand, in January/February, 1974.

Jenny has been selected for the relay at this stage, and further trials to be held during December will determine whether she is included in the individual 100 and 200 metre sprints.

Her inclusion in the team marked a spectacular comeback as the Bronze Medallist of the 1968 Mexico Olympics has been in virtual retirement for 2 years and attained the necessary standards after only 8 weeks' training under the care of former champion sprinter and well known coach, Mike Agostini.

When the popular Jenny takes the blocks at Christchurch, she will have with her the best wishes of all at Leighton that she will bring back more medals for Australia.



Jenny beating Raelene Boyle at Christchurch-Trans Tasman, March 1969.

N.S.W. CONTRACT NEWS

D.H.A. ANAX PTY. LTD – NORTH RYDE

Once again St. James Properties Ltd. and Leighton Contractors have combined in this job situated on Lane Cove Road, North Ryde.

The warehouse/factory section is 170' x 120', portal frame, brick to sill height, metal clad, A.C. roofed structure and the front office section of 50' x 120' is a two storey concrete framed office building.

Manfred Koch is the General Foreman on the job and joined us straight from New Guinea. Despite the standard layout of the job, it has encountered its share of troubles from lack of supplies, non-arrival of tradesmen, strikes etc.

It has been amusing to watch the expressions on Manfred's face as he is told the latest off-site problem delaying the job. Manfred came to Sydney anticipating the big city action with suppliers competing vigorously with each other on cost and service and still wears a bemused look on his face as he picks up his seven cents and walks up the road to the public phone booth because a site phone could not be installed on time. Maybe he is thinking wistfully of the smoke signals and drum beats of New Guinea?!

Mike Deuxberry handles the quantity surveying in his usual phlegmatic style, Dennis Smith did the survey and Rick Nelson and Paddy Carr handled the siteworks.

STOP PRESS: Site 'phone installed three weeks before the job will be completed, and the 'phone company proudly announced this was even one week ahead of when they said they could do it.



D.H.A. Anax at North Ryde.

ST. JAMES PROPERTIES – ARTARMON

Len Charlton, Graham Haddock and Mike Deuxberry are back in an old brick pit again.

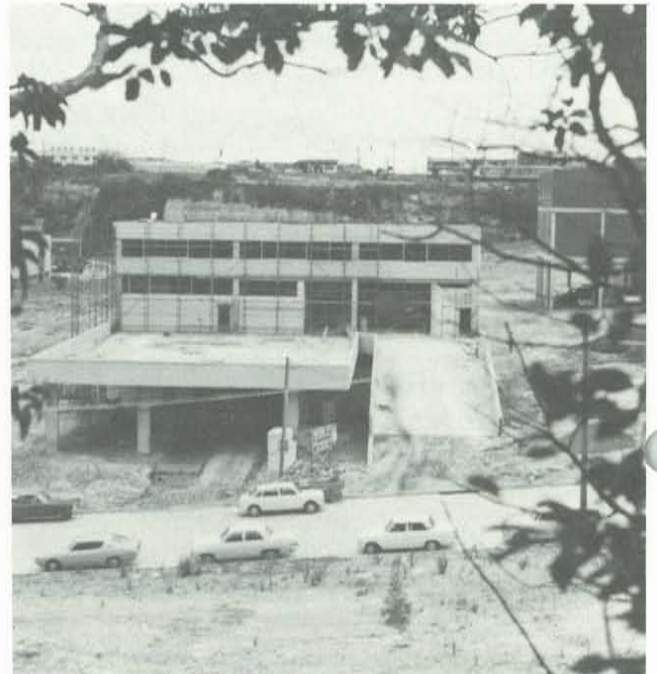
This time we are constructing a \$340,000 warehouse and office building for St. James Properties Ltd. in the same disused brick pit as the I.C.D. building reported in the December, 1972 Newsletter.

The ground floor warehouse has been let to Permewan Food Stores and the first floor warehouse and second floor office block to Oswald-Sealy & Co. Pty. Ltd., merchants and wholesalers.

The job has proceeded as smoothly as the scarcity of bricklayers, formworkers, concrete supply, purlins and fine weather would allow and will be completed early in 1974.

Graham Haddock was demonstrating his expertise with a jackpick for the benefit of some of his men, hit his hip and spent the rest of the day in North Shore Hospital. The men showed a decided lack of enthusiasm in following Graham's flesh jackpicking instructions and went back to their own style of concrete jackpicking. A feature of Graham's accident was the quick response he received from other sites. Jack Biviano, Ron Scott, Eddie Sheeba and Len Charlton were all on the site, in double quick time.

The site was set out initially by Bill Pixton and a large yellow "Chariot of the Gods" Kombivan can often be found parked outside the site. When the door swings open the tall, lean, bearded figure of Mike Deuxberry descends clasping his files ready to sign up more sub-contractors.



St. James Properties at Artarmon with the I.C.D. building we completed last year in the right background.

ALBION REID (N.S.W.) PTY. LTD. AGGREGATE UNLOADING FACILITY – ENFIELD

Work is now well under way on Albion Reid's aggregate unloading facility at Enfield.

This project has been completely designed and engineered by our Mechanical Group.

The plant consists of eight 200 ton capacity steel storage bins, these being loaded from a 60 cu. yd.

rail hopper by way of a 30" wide inclined belt conveyor and 36" wide shuttle conveyor.

To minimise dust emissions from the plant, it was necessary to incorporate an extensive dust collection and suppression system.

The associated roadworks and drainage for the plant have now been included as part of the total contract.

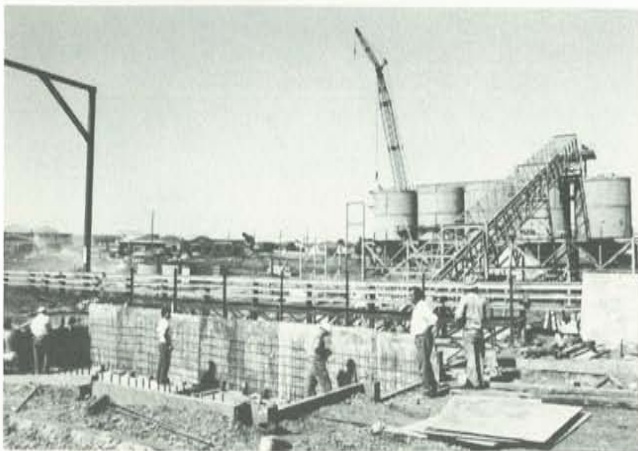
Contract Value: \$480,000 approx.

Project Staff:

Project Engineer	Phil Pontey
General Foreman	Bino Saliba
Surveyor	John Kingsbury
Quantity Surveyor	Phil Steele



Albion-Reid. Erection of the second bin.



Albion-Reid's new aggregate unloading facility with the railway hopper formwork in foreground, sandblasting, belt conveyor and erected bins in background.

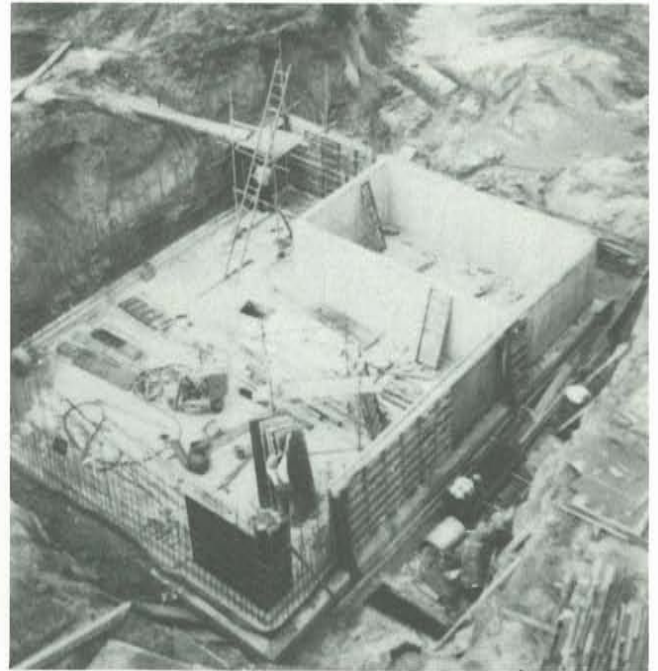
NOTES FROM THE WEST

MIDLAND JUNCTION EFFLUENT TREATMENT PLANT

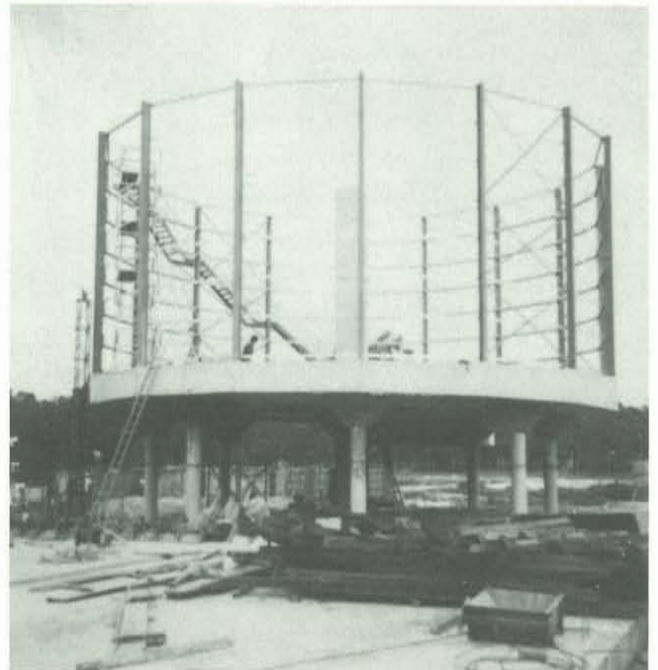
In late June, 1973 work commenced on an Effluent Treatment Plant for the Midland Junction Abattoir Board.

The Contract valued at \$570,000 entails the construction of a concrete aeration basin 150' long and 100 feet wide and 15 feet deep, two circular concrete clarifiers 50' and 60' internal diameter minor concrete tanks and a unique 'Flocor' trickling filter.

The filter tower is basically a 60' circular 16" thick concrete floor suspended 15' above ground level on 8" x 18" circular columns and a central 3' square



Sludge Holding Tank.



Flocor Tower.

pier. The floor is sloped for drainage and has a perimeter upstand with 48 sides.

On the floor are some 3000 concrete masonry blocks laid in rows to support the special filter media through which the fluid trickles for treatment by the bacteria.

Other works covered are structural, mechanical equipment installation, pipework and electrical work.

When completed in February 1974 the plant will be one of the first of its type in Australia, with a capacity to treat 1,050,000 gallons of effluent per day.

PROJECT MANAGER Harry Wallis

CONTRACTS

ADMINISTRATOR John Wildman

FOREMAN Bob Billinghamurst

FOREMAN Joe Ellis

PRE-CAST CONCRETE HOMES

Precast concrete houses that could revolutionise home building in remote areas are being built at Newman, W.A. at the rate of ten a week.

The 75 tile-roof homes, able to withstand winds of up to 140 m.p.h. were designed and built specially for North-West conditions by Leighton Contractors for Mt. Newman Mining Co. Pty. Ltd.

In our August edition we told you of the people involved in this Project and of how they were overcoming the tremendous difficulties of production and erection including cyclones, floods, road closures and material shortages.

Already the National Capital Development Commission in Canberra has expressed interest in this



Workmen slot a pre-cast concrete panel into concrete pillars during the early stages of a house under construction.



A completed pre-cast concrete home at Newman.

type of construction which would be suitable for low cost housing developments.

The pre-cast walls for the 13 and 14 square homes were made on site.

By the time this Newsletter reaches you, the last of the three and four bedroom houses will be completed.

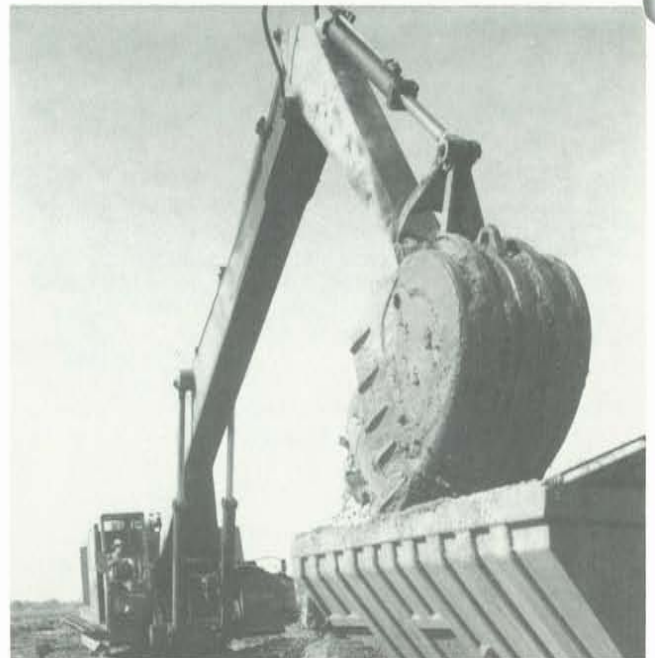
QUEENSLAND NEWS

MAJOR CIVIL WORKS AT THE GOLD COAST

Negotiated contracts extending over the next three years and having a value of approximately \$M11 are proceeding for two major clients on the Gold Coast.

The Sorrento and Benowa Waters estates owned by prominent developer Bruce Small, form the major part of the works and are being constructed on a combined, Scraper, Dragline, Dredge and Backactor operation.

As seen from the accompanying photograph the Koering 1066 Backactor is equipped with a 3 yd bucket and loads into a fleet of five "VOLVO" 12 yard dump trucks. A further 3 VOLVO's are working in conjunction with the Dragline.



"Big Red" in action. Operator Lionel Nitschke.

Leighton have contracted to turn off 100 completed canal blocks every 3 months.

"Hooker Rex" are our clients in the other areas involved. Once again these are Canal subdivisions and include the construction of roadworks, drainage and sewerage.

The areas are — "Burleigh Waters" — 3 stages completed with 3 to go.

"Palm Gardens" — 2 and 1

"Mermaid Waters" — 4 and 2.

294 ADELAIDE STREET

Our multi storey building contract for the left pocket of the suit (Leighton Properties) is proceeding at good pace, not withstanding general material shortages and associated problems.

Lloyd Polglaze reports as follows:

15th floor poured.

16th being formed.

Service core poured to level 18.

Severe so & so hold ups due to shortage of concrete.

Precast cladding is up to level 8.

Siganto & Stacey have the A/C ducts up to level 11.

G.L. Godfrey has the plumbing to the 11th.

O.D. & G. have the sparks to 13.

G.W. Kelly & Son have the brick and blockwork for the toilets and firestairs to level 6.

A Favco 350 was erected two weeks ago on site mainly to assist with work on the service core, but generally to provide more site craneage availability.

Site Personalities

Lloyd Polglaze	Project Manager
Norm Cunningham	(Since Norm started the site has worked 40 days without disabling injury)
John Cowan	Project Co-Ordinator
Snow Bynon	General Foreman
John Anderson	Formwork Foreman
Fred Kruike	Concrete and reinforcing steel Foreman
Ken Fleming	Surveyor
Paul Condon	Project Clerk

THE SOUTHERN SCENE

All is quiet on the Southern Front. Progress is slow on current contracts due to material and labour shortages. The major exception has been meeting the target deadline for the running of trains over the permanent structure at the North Melbourne Flyover. This was achieved through the expenditure of a great number of hours and much sweat and tears on the part of the site staff.

The completion of the remainder of the works, including the ramp entrance to the Underground Rail Loop will proceed at a more leisurely pace.

A new contract for the construction of roads, drainage, landscaping and miscellaneous works at the R.A.A.F. base at Laverton is providing some extra headaches for Joe Cutcliffe and staff. The new works are on the site of the Apprentices Training School which is currently nearing completion.

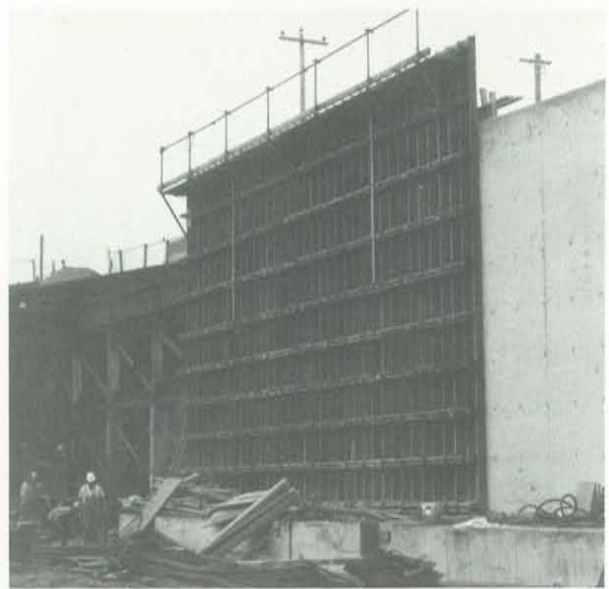
Value of new contract: \$500,000

Supervisors: Bill Whitechurch
Bill Pope

Surveyor: Alan Woodstock



Melbourne Underground Rail Loop — entrance under construction.



"Formwork" — by "Graham Jones" out of "Desperation" — Melbourne Underground Rail Loop.

NEW DIRECTOR FOR LEIGHTON HOLDINGS

The Board of Leighton Holdings Limited has recently announced the appointment of Harry Chariton as an Executive Director.

Previously General Manager — Marketing of Leighton Contractors Pty. Ltd., Harry becomes Director-Corporate Development of the Parent Company.



FROM THE NATIONAL CAPITAL

Despite the problems of labour and material shortages over the past few months, work is progressing well on a number of projects, these include:

Canberra College of Advanced Education Building No. 1 Extensions

This U shaped 3 storey building under the control of Paul Kornprobst is nearing completion and will be ready for handover in February. This project is the first of a number which we will be constructing on this site. Quantity Surveyor, Roy Barton, is pretty keen on orienteering and perhaps this ability will stand him in good stead before work on this site is completed.



C.C.A.E. Building No. 1

Thirty Six Home Units at Kingston

This 270 feet long by 3 storey building is the first private redevelopment to be commenced in the area. It is hoped that these luxury strata-titled units will

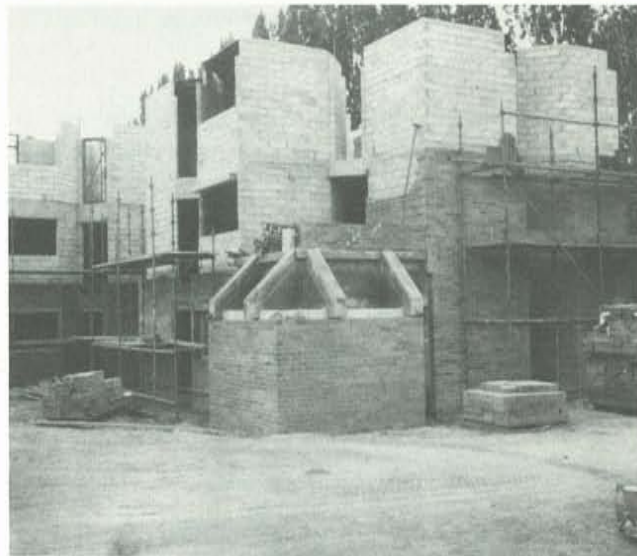


Kingston Home Units

sell to the rich parliamentarians and the like. Construction under the supervision of Frank McGuire and Quantity Surveyor Peter Darling is basically of brick and concrete and features large areas of bagged brickwork. Fittings and finishes are generally of a high standard in keeping with overall concept and each unit has its own private outdoor living area. Carports are provided for each unit and all grounds are landscaped and provided with automatic watering facilities.

A.N.U. Students' Residence

This building continues to be a nightmare for the uninitiated — however 3 months on the site is usually enough for those who are highly skilled to reasonably anticipate the next move. Site Foreman, Burt Gillman and Bob Matts with Quantity Surveyor Trevor Jeffress have the contract well in hand. This job, which is based on a series of "deformed octagons" clusters, is no mean feat of set out and full marks must go to our site staff for the accuracy which has been maintained. The building which is 300 feet long and 4 storeys high is staged in construction to allow finishing to proceed at one end while the carcass is still being constructed at the other. Finishing trades have started on one section and work will have to continue at full pace over Christmas to achieve progressive handover commencing February 1974.



Students Residence A.N.U.

PROPERTIES DIGEST

ALGESTER COURT

While New South Wales witnessed the opening of a Leighton shopping centre in December, Queensland was one jump ahead with the opening of the Algester Court shopping complex on November 17th.

This however, is a slightly smaller centre comprising eight shops to service the growing population of our Ridgewood Heights residential subdivision.

One of the shops in this new parade is in fact occupied by the Ridgewood team. The remainder of the

shops have been let for food stores, a pharmacy, hairdresser and a doctor.

Leighton Properties intend to extend the centre with seven more shops plus a supermarket when the surrounding population can support such a venture.

SNIPPETS

QUEENSLAND

The Gremlins strike again, and another Banana Bender disappears into the Southern Sunset.

John (Streak) Reeves, our very popular Construction Manager has been transferred to N.S.W.

Naturally, a right royal send off was given our old buddy and he was sent on his way in the normal "XXXX" fashion.

John was a prominent member of the Jindalee/Leighton Bowls Push (Lawn Bowls to you mate!) so watch out you Southern types – a bit of Queensland talent is on its way – complete with a new set of bowls duly inscribed with an appropriate symbol.

Good luck, Johnno – come back and see us soon.

NEW STAFF

Patrick Pacey	Accountant
David Dick	Surveyor (Gold Coast)
Bob Buckley	Project Manager D & C
David Garmany	Surveyor (Gold Coast)
Brian Bulman	Project Engineer Townsville
William Byrd	Clerk Senior (Gold Coast)
Paul Condon	Project Clerk
Justin Cecil	Building Supervisor Townsville
Barry Crowe	Foreman Townsville
Francis Olsen	Typist Ridgewood
Robert Persztik	Eng. Surveyor

TRANSFERRED STAFF

Lindsay Pout	Transferred to: Melbourne
John Reeves	Sydney
Sid Baker	Sydney

NORTHERN TERRITORY NEW STAFF

Sheryl Duncan	Typiste Clerk
Ray Martin	Foreman

LEIGHTON PROPERTIES

Welcome to new staff – Howard Menz who has been appointed Shopping Centre Manager of Tweed Mall. Also Chuck Murray who has transferred from Leighton Contractors as a Market Research Executive.

SUMMER HILL

Wal McMartin & Co. are now in residence in Cootamundra. Alf Buttell drove the McMartin goods and chattels to Cootamundra in "The Rocket" and had no trouble with the inanimate objects, but Wally's dog proved to be a poor traveller. Alf and the anti-social dog companion reached Cootamundra at Show time and couldn't find anybody to open up the house for them. Alf's versatility came to the fore and now the house has a ventilated laundry window.

On the site Wal can be found building a meatworks

with a bemused look on his face. After obtaining equipment to work on the job he suddenly saw the grader driving out the gate. "Hey! Where do you think you are going?" "Sorry mate, the Rodeo is on in town this week, I have to prepare the site." Having resigned himself to this it was not long after that Wal discovered there was no backhoe! "Surely not the Rodeo this time." "No mate, the operator is off to Sydney for a while".

Still pushing the job along, Wal slipped and fell, severely twisting his ankle. Peter Dell called an ambulance and stayed to assist. After thoughtfully eyeing Wal's solid build Peter's assistance eventuated to opening the ambulance door!!!

Alan Amos' short lived bachelor days are over now that he and Lyn have married. Alan's long awaited Bucks Do flowed through the night and finalised at a Spanish Restaurant where everyone 'caraffed' red wine and large quantities of spiced tortillas and garlic pizzas, and so ends the saga, so you say, but not so! The incubation and fermentation period for spiced tortillas and garlic pizzas pickled in red wine has now been reliably recorded as between nine and twelve hours. The next day being a working day, or rather a week (weak?) day when all Bucks Do participants were resident at Summer Hill, found the non-participants trying unsuccessfully to ignore the indelicate odours permeating the areas occupied by Bucks Do participants.

Finally the sensitive feminine nostrils could take no more. There were quick conferences and suddenly the air was filled with a sweet smell wafting around the offices. Rumours of half a bottle of perfume injected into the air-conditioning system have not been denied.

The Plant Department held their kiddies' Christmas Party on the Georges River at East Hills recently. All the kids enjoyed themselves, especially those between 18 and 68 years of age.

The cheery humour of Harry Higgins was missing while Harry spent time chatting up the nurses in hospital, but personalities and humour abounded.

Some hardies ventured out early to "reserve" a spot only to dead heat with another firm bent on the same idea. Naturally, charm and ideal public relations won in the end – there were more of us!!

Col Cawdell-Smith went off to catch some fish for the barbecue. Col ate the lot, or rather Col ate the fish. Mike Podger showed why he is a handyman (Newsletter December, 1972) and not a cook, "Barney" Bonnett resplendent in a sports coat and shorts, ate enough for a month, Tony Staggs rounded up the girls, Dusty Thill went home early, Kevin Nesbitt got sprayed with the fat (Kevin could do with some fat on him), Bob Lewis and Peter Tesoriero proved expert beer tasters and Arthur Soden supervised with a rubber mallet and polaroid camera.

Hec Fleming provided the thrill of the day for the under 18 kids while giving them speedboat rides on the river. The water police pulled Hec over for a show of his licence. Hec pulled out – last year's licence!! Wide eyed kids!

A Scottish newspaper reports: "The fastest time for constructional bricklaying was set up by Englishman, J.E. Bloxham, who built a 13½ foot wall with 5,188 bricks in seven hours, 35 minutes". (Perhaps that should have read 13½ inch thick wall?) At this rate of 684 bricks per hour, on a 40 hour week at \$140.00 per thousand, Mr. Bloxham would earn \$3,830.00 per week and nearly \$200,000.00 per year laying 1,422,720 bricks.

Imagine if Peter Cockerill could find just two bricklayers like Mr. Bloxham, the 5 million bricks at Bradfield Park would be laid in 21 months.

The recent Australia - South Korea elimination soccer matches for the World Cup were watched and discussed with great interest. After two Scots Jimmy Rooney and Jimmy Mackay combined to score the winning goal, Allister MacNeill brought the house down with his "I was proud to be an Australian" as only one from the land of heather could say it. Spare a thought for the estimating section should Scotland and Australia be drawn to meet in Munich now that England has been eliminated.

The Leighton cricket team swung into action again, but down came the rain before our turn to bat. Some highlights before the heavens opened up were when Warren Trotman held an animated conversation with a Council Inspector on the merits of parking cars on the grass and when John Manchester, who normally bemuses the batsmen, had extreme difficulty in missing the bat with his bowling.

A big welcome to our latest migrant - Lyell McPherson, all the way from Melbourne. Lyell has been playing musical offices as he tries to find some place to arrange his pipes. Lyell's easy to part hairstyle is generally rumoured to signify an intensely virile man. This could explain why after working, searching for a home for his family and showing us the Melbourne style of squash (goals and behinds?) he can still manage to bound out of bed, into the pool, have breakfast and be at the office across the road from his motel in very smart time.

Talking of motels, who was the senior (age and/or position?) member of Leightons who was found stretched out on his motel bed, fast asleep, 'phone in hand and little black book open at the appropriate page. Clear case of the spirit was willing but the flesh was weak. Maybe he had a full head of hair, eh?

WESTERN AUSTRALIA

Welcome to New Staff

David Wyatt	Estimator
Bruce Phillips	Estimator
Lucy Roesinger	Subcontract Clerk
Jennifer Smith	Typist
John Abbott	Contract Administrator

Congratulations to New Parents

Helen and Laurie Voyer on the arrival of their son Deon William.

Bernice and Frank Caley proud parents of Johnathon Francis, and

Wendy and John Wildman a lovely daughter Venessa.

Best wishes to Hannah Finlay-Notman and David Tebbuett, who recently announced their engagement, Hannah is Receptionist Perth Office.

Pieter Bunschoten is very proud of his new yacht 20' "Red Witch" - cast in "Leighton Orange" fibreglass - Pieter was second over the line in his first race and is predicting a great future.

Fred Witting is settling back into Perth after his year in Darwin.

VICTORIA

It is good news to welcome Jack Fanning back into circulation after his tangle with an unco-operative brick wall.

The peace which has reigned in Launceston during the winter was rudely shattered when the terrible trio of Trevor Treadwell, Les Hamilton and Jeff Sharp hit the town again. We've been assured that the house move was not the result of an eviction notice.

Colin Jesse "James" will have to buy a new pair of boots when he returns to Launceston. Last year's gold plated, she-bolted, concrete filled, ball-and-chained model don't fit very well.

Melbourne Branch is exporting more of its expertise to the other States. Lyall McPherson is moving to Sydney to establish a plumbing division. Harry Reynolds is off to Adelaide to supervise the beginning of a hotel project. Andrew Simpson is in Adelaide assisting the smooth running of the Target Store.

We will be recovering one of our expert exports when Lindsay Pout returns to take over the accounts.

Welcome Deirdre Browning to accounts payable.

Congratulations to Terry and Dianne O'Connor on their latest addition, Meaghan.

Congratulations Robert and Elizabeth on tying the matrimonial knot. Best wishes Elizabeth for your full time studies in the New Year.

Congratulations Judith, you've made Mr. Hall an honest man at last.

Welcome Harry Van Andel to the team of estimators currently trying very hard to win some new work.

Welcome back to Ralph LeGrand and Mike O'Donnell after their recent hospitalisation.

EDITORIAL STAFF

G. CASTIEAU	EDITOR, SUMMER HILL OFFICE
I. DODD	MELBOURNE OFFICE
P. GREGG	CANBERRA OFFICE
K. NIPPERESS	BRISBANE OFFICE
MRS. K. CREAGH	PERTH OFFICE
M. YELL	SYDNEY HEAD OFFICE
M. CHAMBERS	SUMMER HILL OFFICE
G. FRENCH	LEIGHTON PROPERTIES
M. RAFFETY	INDONESIA
J. FINLAYSON	TAIWAN